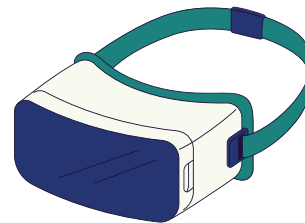
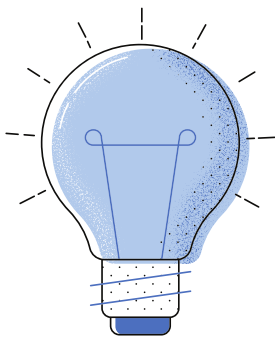


# Care Tech Catalogue



# How to use this catalogue

We've created this catalogue to gather a list of devices we've tested and used to support people throughout the Care Technologist project. Here you can review the technology we used, find out a bit about the usability, and think about what you would want for your loved ones, residents or yourself.

Some of the technology is better placed in the home, others are more suitable for a care home setting.

A hard and digital copy of this catalogue are available. The link to order the items are accessed only through the digital version. There's also space for you to write a list of your own.



# Kettle companion

[Link to kettle companion](#)  
(digital only)

Assisted living device (small sphere) , placed in a loved ones' home to allow light touch monitoring. A secondary device is placed in a family member's home which will turn to a different colour when their loved one is boiling their kettle, or in the instance the kettle hasn't boiled by a pre-set time.

Price: around £50



# Curtain or blind robot

[Link to Switchbot Curtain](#) (digital only)



Open and close curtains with voice or through the app!

- Requires Switchbot hub (£35) to work with Alexa, easy to install, long battery life.
- Make sure to check compatibility with curtain rail, most options are available.

Price: around £85

# Smart bulb

[Link to Philips Hue Smart Bulb](#)  
(digital only)



Voice or app activated lights to set up around the home. Can reduce fall likelihood for those with poor mobility.

- Warm light, LED and dimmable
- Many brands to choose from (Tapo, Philips, Hey!)
- Energy-saving

Prices start around £8

# Flood prevention plugs

[Link to Magiplug](#) (digital only)



Safety plug used to prevent flooding - when water level reaches certain depth, pressure system activates to release water down plughole.

- Can be used for bathtubs or sinks
- Easy to install, not electronic

Prices start around £8

# Locating tags

[Link to Tile Mate](#) (digital only)



Versatile tracker for keys, bags, phones, remote controls and more.

- Works with Bluetooth
- App on phone sends musical alert and also pinpoints lost item on map
- Can also use tile to find phone

Price starting around £35.00

# Hydration reminder

[Link to Ulla Smart Hydration](#)

(digital only)



- Attaches to any water bottle or standard sized glass
- Blinks to remind you to hydrate, can detect when you take a drink.
- No sound alert/vibration
- Ideal reminders for those suffering from dehydration

Prices start at £17



# Smart plug

[Link to Meross Smart Plug](#)  
(digital only)

A plug to manage devices across the home without having to reach them.

- Any socket - remote access or voice control
- Easy to install
- Works with Apple Homekit/Alexa/Hey Google
- Variety of brands available

Price: starts at £16-£20



# Doro 6820

[Link to Doro phone](#) (digital only)



The Doro flip phone is simple to use, has an easy to find emergency assistance button and is designed as a stripped back mobile for older people and people with dementia.

- Hearing aid compatible, easy to read display, enhanced sound for clearer conversations
- Not internet compatible

Price: starts at £89.99

# Bone conductor earphones

[Link to Shokz Openmove  
headphones](#) (digital only)



Bluetooth enabled over-ear device that enables listening without in-ear discomfort

- Good for use with hearing aids
- Easy to set up, fit securely
- One - size only

Price: starts at £79.99

# Echo show

[Link to Echo Show 8 on Amazon](#) (digital only)



8" HD screen device with available widgets, apps, voice activation, video calls and smart tech control for the whole house and family

- Drop-in and calls to other echo devices available
- Disconnect microphone and camera easily for privacy
- Plug-in device - does not run via battery

Price: starting around £70 (Nov 2022)

# Sensor lights



[Link to sensor light](#) (digital only)

Sensor lights are great for people with limited mobility, who are prone to falls, or living with dementia.

- Can be battery operated or USB charged
- Can be stuck in any location around the house
- Lights in link only turn on when dark - saving energy

Price: starts around £10

# Companion pet

[Link to Joy for All Cat](#)  
(digital only)



Robotic pets are great for homes unable to host animals, and have proven to be a therapeutic aid for people living with dementia.

- Cat purrs, sleeps, reacts to attention
- Can be muted while turned on
- Uses batteries

Price: Starts around £120

# Daylight lamp

[Link to Lumie light](#) (digital only)



This light is suggested to use for 30 minutes a day, preferably in the morning, to reduce effects of Seasonal Affective Disorder (SAD).

- The light is proven to help people with dementia read more clearly
- Good for people who do not get out often or see plenty of sunlight

Price: starts around £70

# Echo dot

[Link to Echo dot \(digital only\)](#)



Device links up to other Echo and Alexa devices to improve Smart home technology

- Can call or drop in on other Echo devices
- Useful for radio, music and audiobooks
- Classic features such as alarms, reminders, weather checks and news updates

Prices start around £50



# Robot vacuum and cleaners

[Link to robot vacuum \(digital only\)](#)



Robotic cleaners can assist those with low mobility remain independent and keep a clean home.

- Charge in ports when not in use
- Works with Alexa devices and connects with Smart Home apps
- Set cleaning schedules useful for those living with dementia

Prices start around £200

# Ring doorbell

[Link to Ring doorbell \(digital only\)](#)



Offers extra security and ability to communicate with visitors without having to get to the door.

- Good battery life and easy set up
- Can adjust how many notifications you receive

Prices range from £90-£180

# Universal remote

[Link to Doro controller \(digital only\)](#)



A simplified TV remote to uncomplicate using TV's, including smart TVs.

- Large buttons that are easy to press and well spaced out
- Ideal for people living with dementia or with low visibility

Prices start around £14.99

# Echo flex

[Link to Echo Flex \(digital only\)](#)



Does the same as other Echo devices - drop-in, voice activated, links and manages other apps such as smart bulbs and smart plugs - only cheaper and operates without a large speaker. Plugs into a socket.

- Connects to other Echo devices, useful as a voice assistant in smaller or extended rooms
- USB port at bottom of device can fit sensor lights, chargers and more

Prices currently around £10

# Meross Smart Thermostat

[Link to Meross](#) (digital only)



Able to control your heating through a smartphone or smart speaker.

- Compatible with Alexa and Google Assistant so you can control it with your voice.
- Normally requires a qualified electrician to install.

Price: £58.99



**That's it for now, but we are constantly searching for new technology and devices that can support people to live independently, and well. A digital and hard copy of this catalogue are in circulation, so if you want to keep up to date with our added tech list please visit the Scottish Care Website to view the digital copy, which is updated more frequently.**

**This copy is up to date as of May 2023.**

# Space for notes and your own list



# Space for notes and your own list







**Registered  
Charity  
SC051350**